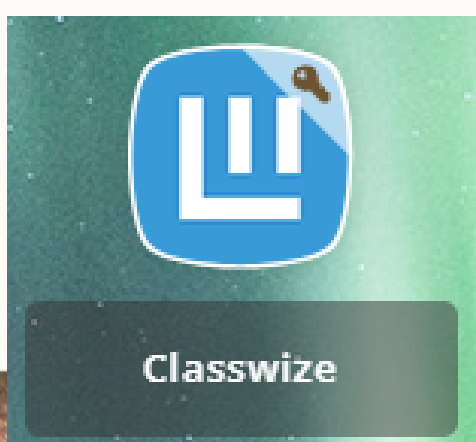
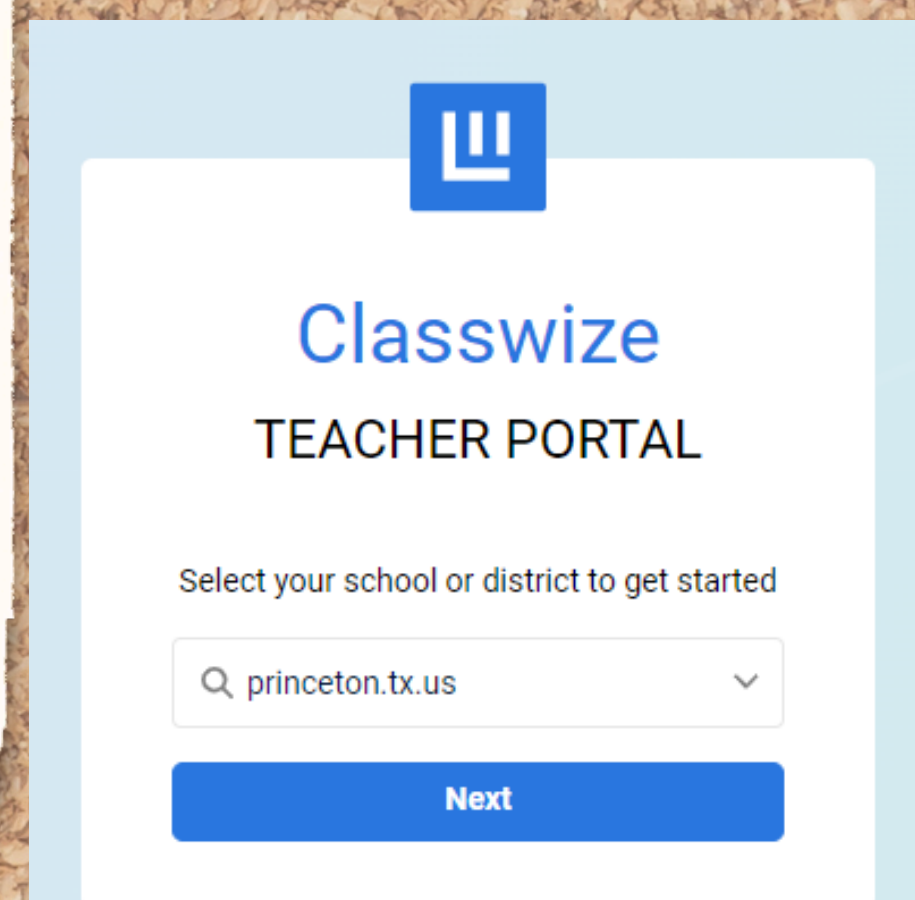




Harper CLASSWIZE



Choose District
then sign in with Google



01

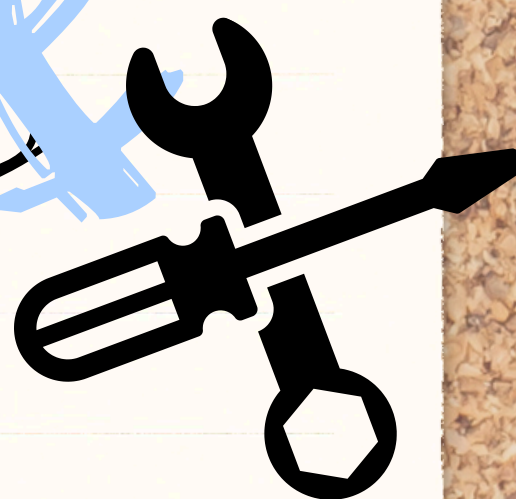


Start a Class

Pick the class period
Set an appropriate end time
Adjust tile size

Student Tiles

View tiny screens
or website lists
Pin someone to the top
Tools on tile top tool bar
Similar under Class Tools (apply to all)



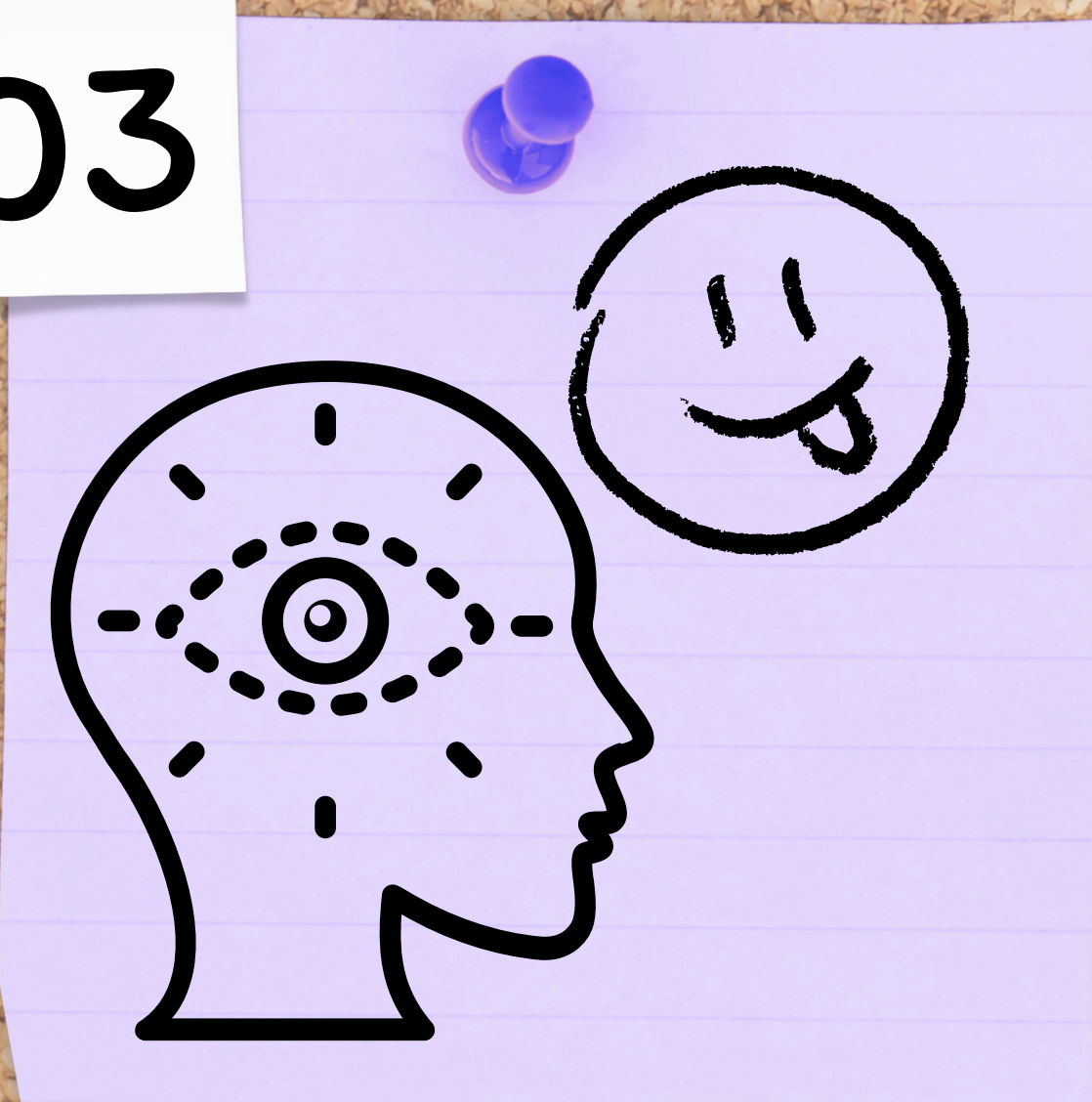
02



Focus Session

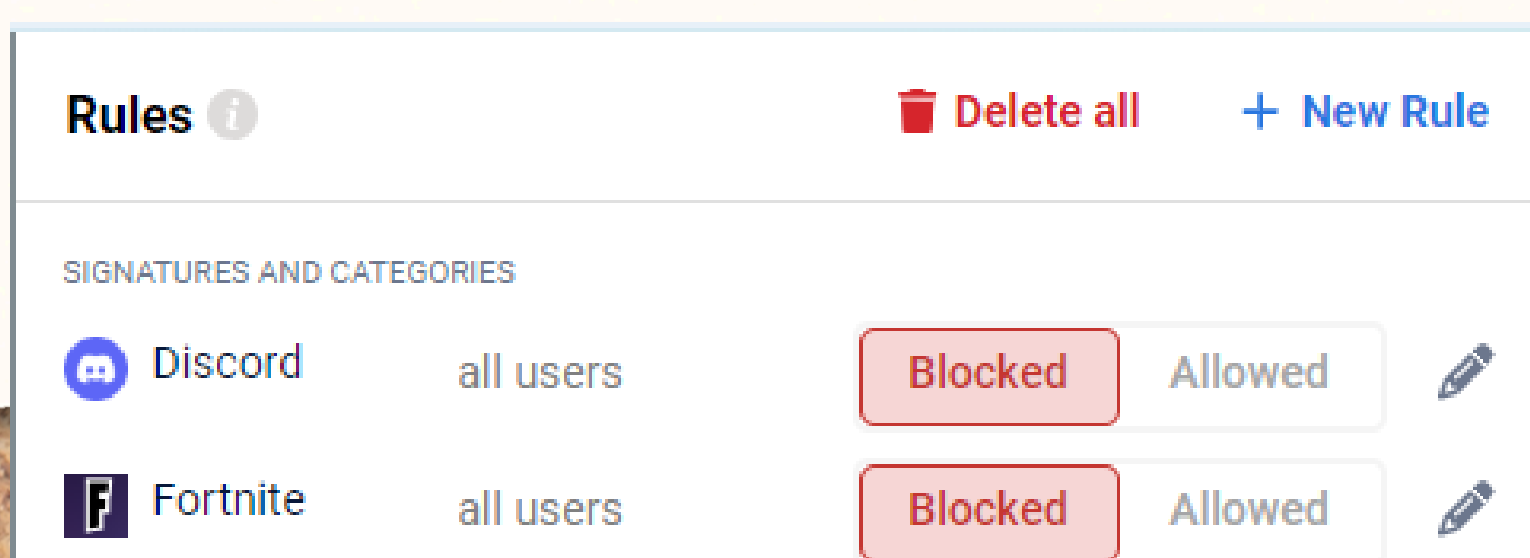
THE MOST IMPORTANT THING
Always be Focused
Set websites they are allowed to have access
to. Allows you to teach while it keeps students
on task and keeps records

03



Rules

When not in a focus session you have rules to limit
web access. Won't block YouTube or Google Sites.
All Google Always allowed



04

